

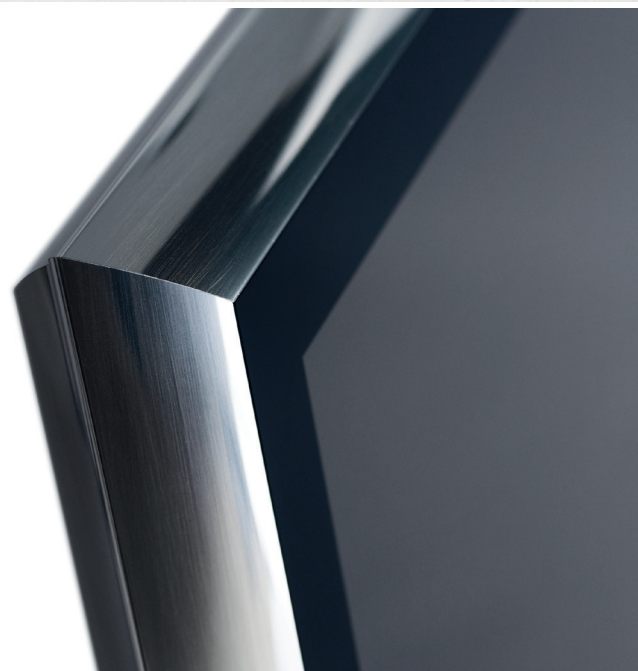
BEOVISION 11

A one solution TV



SOUND IS HALF THE PICTURE

BeoVision 11 is sound, picture, digital entertainment and beautiful design, created to make great experiences for the family even better – be it movies, sports, games or music. The slim and elegant high-gloss aluminium frame and the large glass surface that sits flush against the screen make it a solution packed with details that require exceptional craftsmanship. It takes control of any connected device you may have from one Bang & Olufsen remote control.

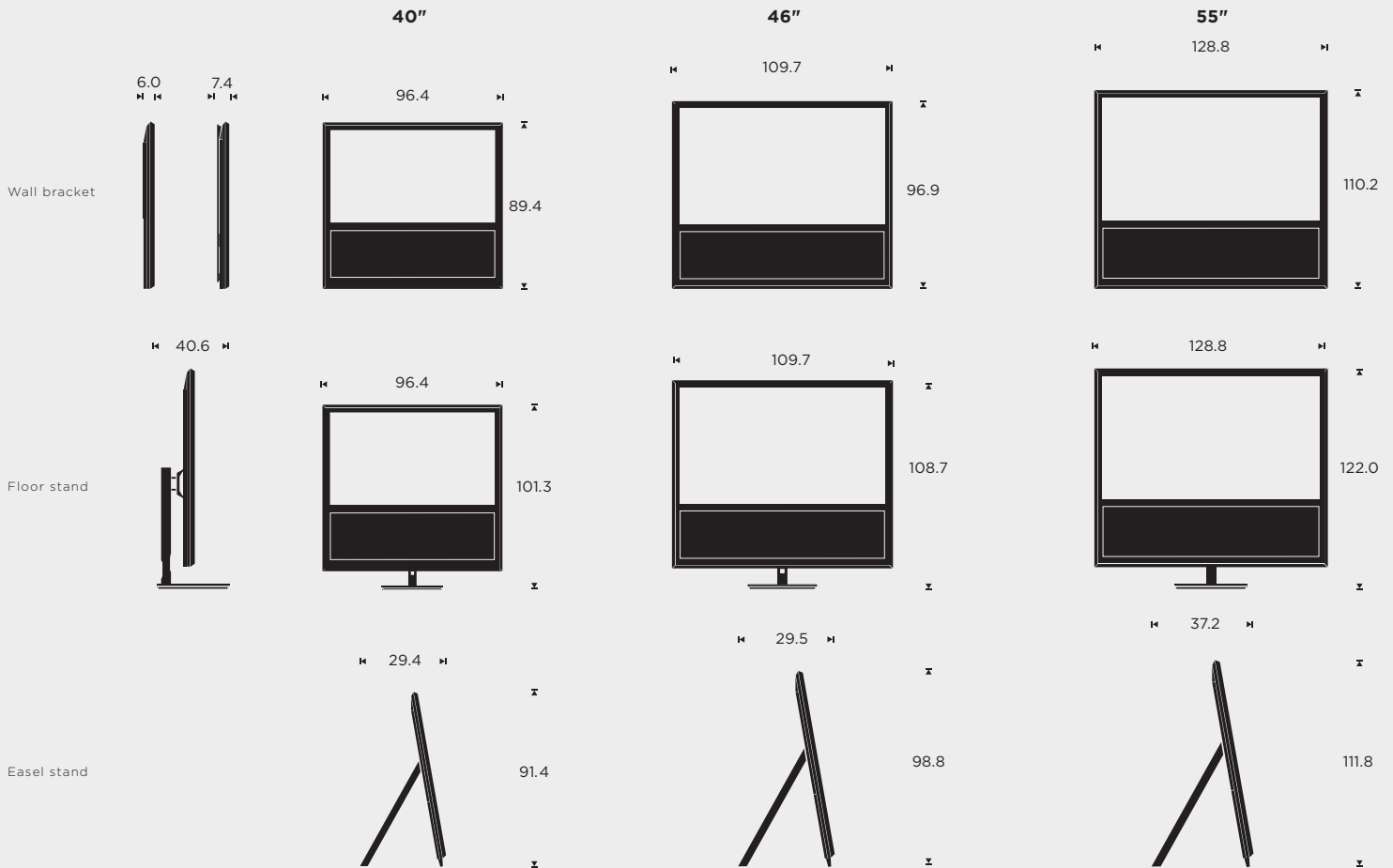


BANG & OLUFSEN

MEASUREMENTS

in cm

bang-olufsen.com/beovision11



SPECIFICATIONS/FEATURES

Designer

David Lewis Designers

Placement options

Manual wall bracket
 Motorised wall bracket
 Motorised floor stand
 Easel stand

Weight

40": 41 kg
 46": 48 kg
 55": 63 kg

Display

Full High Definition
 200/240 Hz
 Edge-type LED backlight with 1.5D dimming and 3D

Sound

Fully active, three-way stereo speaker solution
 2 x 3/4" tweeter
 2 x 2" midrange
 2 x 4" woofer
 6 x 32 watts class D ICEpower amplifiers one for each driver
 Integrated surround sound module
 Truelmage up and downmixing
 Immaculate Wireless Sound integrated for a full wireless surround solution
 BeoLink Multiroom technology is integrated

Video

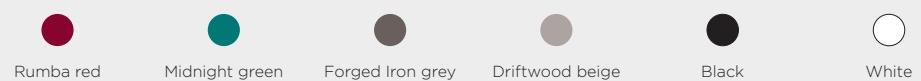
Integrated HDD optional*
 Bang & Olufsen Smart TV*
 HbbTV*
 Antireflection coated contrast screen
 Automatic Picture Control adjusting the picture performance to the light conditions in the room

*market or broadcaster dependent

Colors

Cabinet: Black
 Frame: Aluminium or black

Fabric colors



11.2015V02