

## BeoPlay S3

Important

Viktigt

Viktigt

Tärkeää

Wichtiger Hinweis

Important

Importante

Importante

Belangrijk

Importante

Σημαντικό

Внимание!

중요

重要

重要事項

注意

For additional information, see (link provides content with regulatory conformance guidelines):

Se yderligere oplysninger på:

Mer information finns på:

Lisätietoja saat seuraavista osoitteista:

Für weitere Informationen, siehe:

Pour plus d'informations, visitez (lien fournit du contenu aux directives de conformité réglementaires):

Si desea obtener más información, visite el sitio web:

Per ulteriori informazioni, vedere:

Voor meer informatie, zie:

Para obter mais informações, consulte:

Για περισσότερες πληροφορίες, δείτε:

Дополнительную информацию см. по адресу:

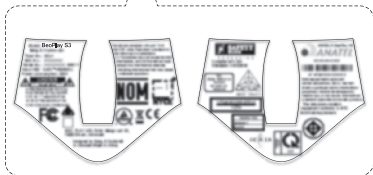
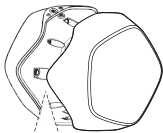
詳細資訊，請參閱：

詳細については、次をご覧ください：

자세한 내용은 다음을 참조하십시오.

如需了解更多详情，请参见：

*[www.beoplay.com/important\\_information](http://www.beoplay.com/important_information)*



CE

**Important safety instructions**

- 1) Read these instructions.
- 2) Keep these instructions.
- 3) Heed all warnings.
- 4) Follow all instructions.
- 5) Do not use this apparatus near water.
- 6) Clean only with dry cloth.
- 7) Do not block any ventilation openings. Install in accordance with the manufacturer's instructions.
- 8) Do not install near any heat sources such as radiators, heat registers, stoves, or other apparatus (including amplifiers) that produce heat.
- 9) Do not defeat the safety purpose of the polarized plug. A polarized plug has two blades with one wider than the other. If the provided plug does not fit into your outlet, consult an electrician for replacement of the obsolete outlet.
- 10) Protect the power cord from being walked on or pinched particularly at plugs, convenience receptacles, and the point where they exit from the apparatus.
- 11) Only use attachments/accessories specified by the manufacturer.
- 13) Unplug this apparatus during lightning storms or when unused for long periods of time.

- 14) Refer all servicing to qualified service personnel. Servicing is required when the apparatus has been damaged in any way, such as power-supply cord or plug is damaged, liquid has been spilled or objects have fallen into the apparatus, the apparatus has been exposed to rain or moisture, does not operate normally, or has been dropped.
- 15) The max ambient temperature should not exceed 45°C.

WARNING: The mains plug/appliance coupler is used as disconnect device, the disconnect device shall remain readily operable.

No naked flame sources, such as lighted candles should be placed on the product

The supplied plug and mains cord are specially designed for the product. Do not change the plug, and if the mains cord is damaged, you must buy a new one from your Bang & Olufsen retailer.

WARNING: To reduce the risk of fire or electric shock, do not expose this appliance to rain or moisture. Do not expose this equipment to dripping or splashing and ensure that no objects filled with liquids, such as vases, are placed on the equipment.



The lightning flash with arrowhead symbol within an equilateral triangle, is intended to alert the user to the presence of uninsulated “dangerous voltage” within the product’s enclosure that may be of sufficient magnitude to constitute a risk of electric shock to persons.



The exclamation point within an equilateral triangle is intended to alert the user to the presence of important operating and maintenance (servicing) instructions in the literature accompanying the product.



**CAUTION**

To prevent electric shock hazard, do not connect to mains power supply while grille is removed.

### *FCC STATEMENT*

This device complies with Part 15 of the FCC Rules. Operation is subject to the following two conditions:

- (1) This device may not cause harmful interference.
- (2) This device must accept any interference received, including interference that may cause undesired operation.

Changes or modifications not expressly approved by the party responsible for compliance could void the user's authority to operate the equipment.

NOTE: This equipment has been tested and found to comply with the limits for a Class B digital device, pursuant to Part 15 of the FCC Rules. These limits are designed to provide reasonable protection against harmful interference in a residential installation.

This equipment generates uses and can radiate radio frequency energy and, if not installed and used in accordance with the instructions, may cause harmful interference to radio communications. However, there is no guarantee that interference will not occur in a particular installation. If this equipment does cause harmful interference to radio or television reception, which can be determined by turning the equipment off and on, the user is

encouraged to try to correct the interference by one or more of the following measures:

- Reorient or relocate the receiving antenna.
- Increase the separation between the equipment and receiver.
- Connect the equipment into an outlet on a circuit different from that to which the receiver is connected.
- Consult the dealer or an experienced radio/TV technician for help.

CAN ICES-3 (B)/NMB-3(B)

*IC warning*

This device complies with Industry Canada licence-exempt RSS standard(s). Operation is subject to the following two conditions:

- (1) this device may not cause interference, and
- (2) this device must accept any interference, including interference that may cause undesired operation of the device.

This equipment complies with the FCC radiation exposure limits set forth for an uncontrolled environment. This equipment should be installed and operated with a minimum distance 20 cm between the radiator and your body.



Le présent appareil est conforme aux CNR d'Industrie Canada applicables aux appareils radio exempts de licence. L'exploitation est autorisée aux deux conditions suivantes :

- (1) l'appareil ne doit pas produire de brouillage, et
- (2) l'utilisateur de l'appareil doit accepter tout brouillage radioélectrique subi, même si le brouillage est susceptible d'en compromettre le fonctionnement.

Model: BeoPlay S3

Product Name: Bluetooth Speaker

Bang & Olufsen a/s

Phone number: +45 96841122

[www.bang-olufsen.com](http://www.bang-olufsen.com)

以下規範供臺灣市場使用...

The following specifications are for Taiwanese market usage ...

Rating: 額定值	100-240V ~ 50/60Hz 20瓦
Dimensions: 尺寸	180 x 180 x 120 (毫米)
Colours: 顏色	Bright white 亮白
Power consumption: 耗電功率	20瓦
Bluetooth: 藍牙	BT4.0

“本產品符合低功率電波輻射性電機管理辦法：

## 第十二條

經形式認證合格之低功率射頻電機，非經許可，公司、商號或使用者均不得擅自變更頻率、加大功率或變更原設計之特性及功能。

## 第十四條

低功率射頻電機之使用不得影響飛航安全及干擾合法通信；經發現有干擾現象時，應立即停用，並改善至無干擾時方得繼續使用。

前項合法通信，指依電信規定作業之無線電信。低功率射頻電機須忍受合法通信或工業、科學及醫療用電波輻射性電機設備之干擾。

BeoPlay S3

产品中有毒有害物质或元素的名称及含量

部件名称:	有毒有害物或元素					
	铅 (Pb)	汞 (Hg)	镉 (Cd)	六价铬 (Cr[VI])	多溴联苯 (PBB)	多溴二苯醚 (PBDE)
印刷电路板	×	0	0	0	0	0
扬声器	0	0	0	0	0	0
线材	×	0	0	0	0	0
附属物	0	0	0	0	0	0
外壳	0	0	0	0	0	0
布	0	0	0	0	0	0

## 图表符号

- 表示该有毒有害物质在该部件所有均质材料中的含量均在SJT 11363-2006规定的限量要求以下。
- × 表示该有毒有害物质至少在该部件的某一均质材料中的含量超出SJT 11363-2006规定的限量要求。

## English



Electrical and electronic equipment, parts and batteries marked with this symbol must not be disposed of with normal household wastage, it must be collected and disposed of separately to protect the environment.

Your Bang & Olufsen retailer will advise you of the correct way of disposal in your country.

Dansk (*Danish*)



Elektrisk og elektronisk udstyr, reservedele og batterier, der er mærket med dette symbol, må ikke bortskaffes sammen med almindeligt husholdningsaffald. Det skal indsamles og bortskaffes separat for at beskytte miljøet.

Din Bang & Olufsen forhandler kan rådgive dig om den korrekte bortskaffelsesmetode i dit land.

Deutsch (*German*)



Mit diesem Symbol gekennzeichnete elektrische und elektronische Geräte, Bauteile und Batterien dürfen nicht in den normalen Haushaltsmüll gegeben, sondern müssen zum Schutz der Umwelt sämtlich getrennt eingesammelt und entsorgt werden.

Ihr Bang & Olufsen Fachhändler berät Sie bei der sachgerechten Entsorgung in Ihrem Land.



Français (*French*)



Il n'est pas permis de jeter les équipements, les pièces électriques et électroniques et les ménagères; ces équipements doivent être collectés et mis au rebut séparément afin de préserver l'environnement.

██████████  
Votre revendeur Bang & Olufsen se fera un plaisir de vous conseiller sur la procédure correcte de mise au rebut dans votre pays.

## Español (*Spanish*)



Los equipos, piezas y baterías de tipo eléctrico y electrónico marcados con este símbolo no deben eliminarse junto con los residuos domésticos habituales; en su lugar, deben ser recogidos y eliminados de forma independiente para proteger el medioambiente.

Su distribuidor de Bang & Olufsen le asesorará acerca de los pasos a seguir en su país para realizar la eliminación de forma correcta.

## Italiano (*Italian*)



Apparecchiature elettriche ed elettroniche, parti e batterie, contrassegnate con questo simbolo non devono essere smaltite con i normali rifiuti domestici, ma devono essere raccolte e smaltite separatamente per proteggere l'ambiente.

Per informazioni sulla procedura di smaltimento corretta per il proprio Paese, rivolgersi a un rivenditore Bang & Olufsen.

