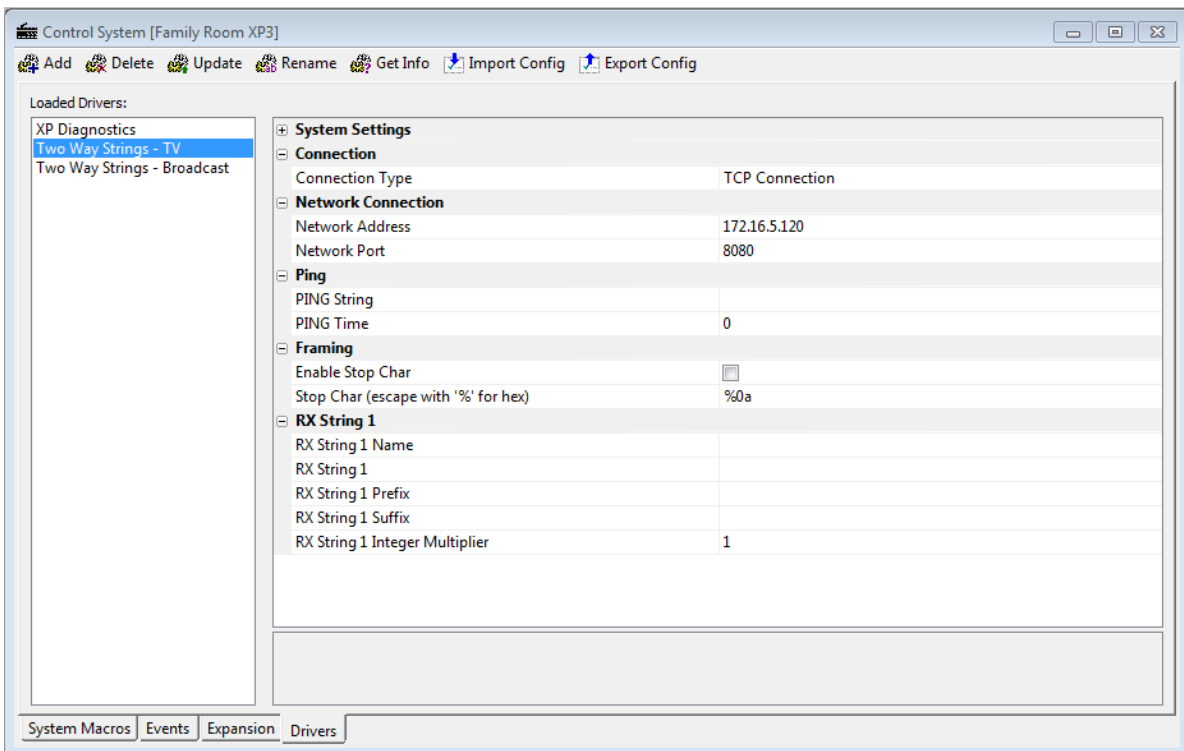


The BeoRemote.zip file contains a quick RTI demo program that shows you how you can control the B&O products directly over IP, it's not a compiled driver, but you can copy/paste the buttons/functions from here or just use this program as your base program for control.



For the test we used an RTI XP-3 processor and a Virtual Display build with B&O BeoRemote commands. The TV was configured on IP address 1762.16.5.120 as seen below.



WOL was also tested, connection was configured to the broadcast address (results = 12 sec when TV is in deep sleep mode)

