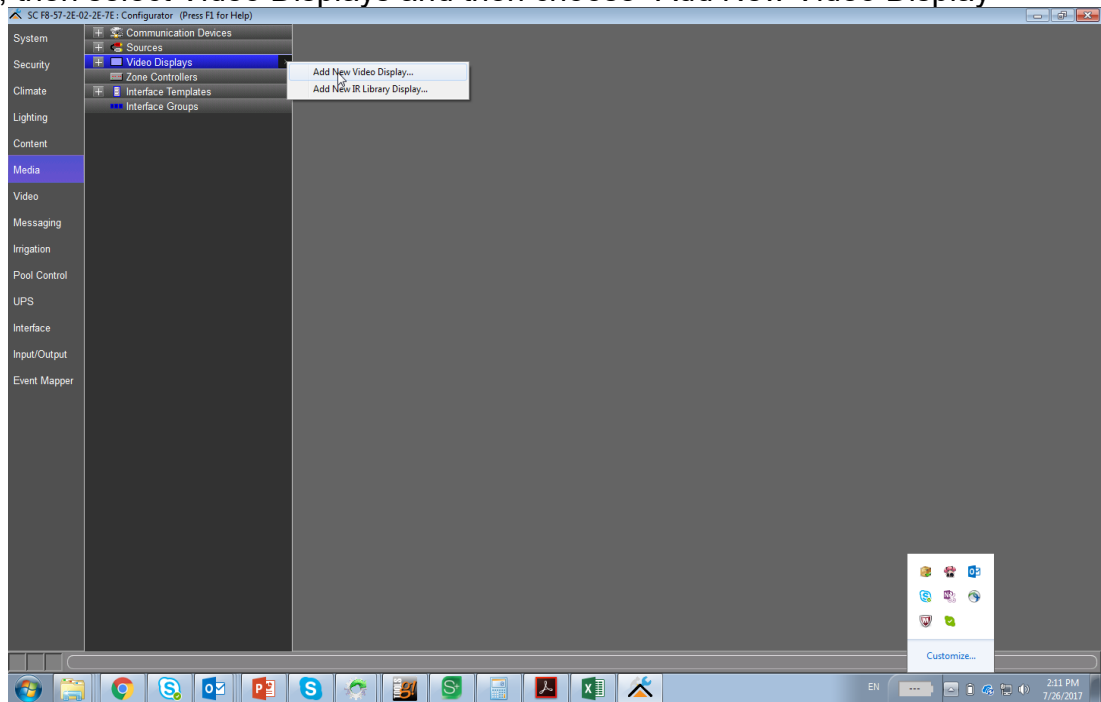
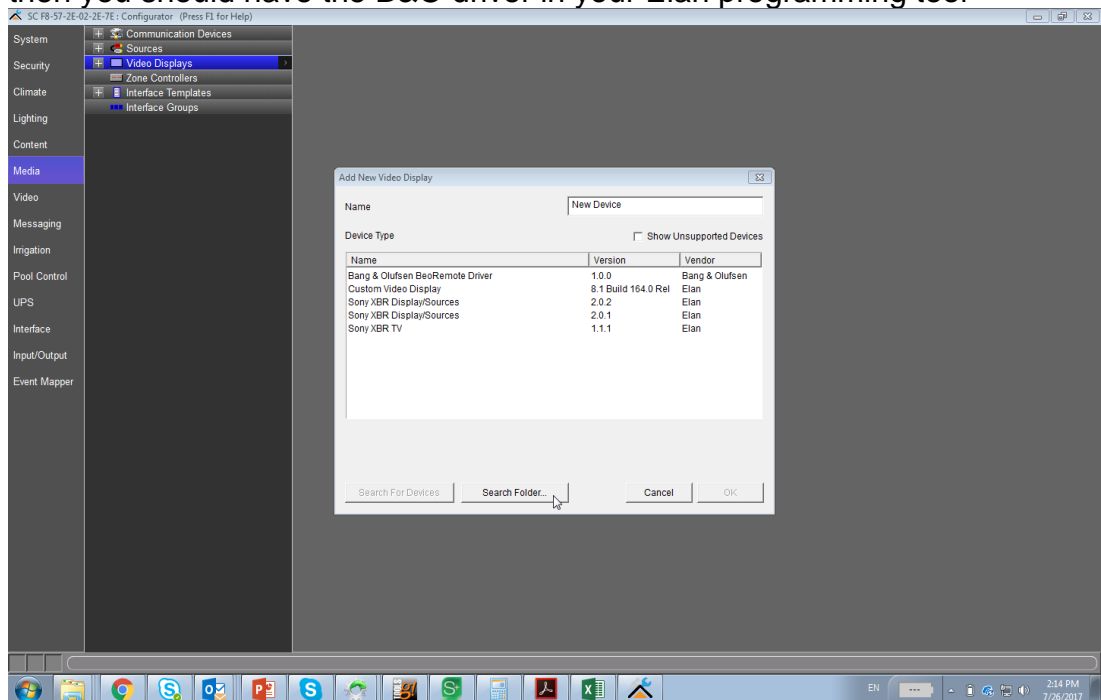


1. Save the driver on your computer, then open your Configurator program, select Media, then select Video Displays and then choose “Add New Video Display”



2. Then click “Search Folder” and browse to the folder where you have saved the driver, then you should have the B&O driver in your Elan programming tool



- To expose the B&O TV UI go into the interface tab (in the configurator) and navigate to touchpanel settings, the name of your PC, usually Windows, and click on Media. You should then see the name of the TV zone under available pages, just select it, then move it over to visible pages.

